

MONTHLY MEMBERSHIP PROGRESS REPORT

District 201Q2

Results as of: 6/30/2024

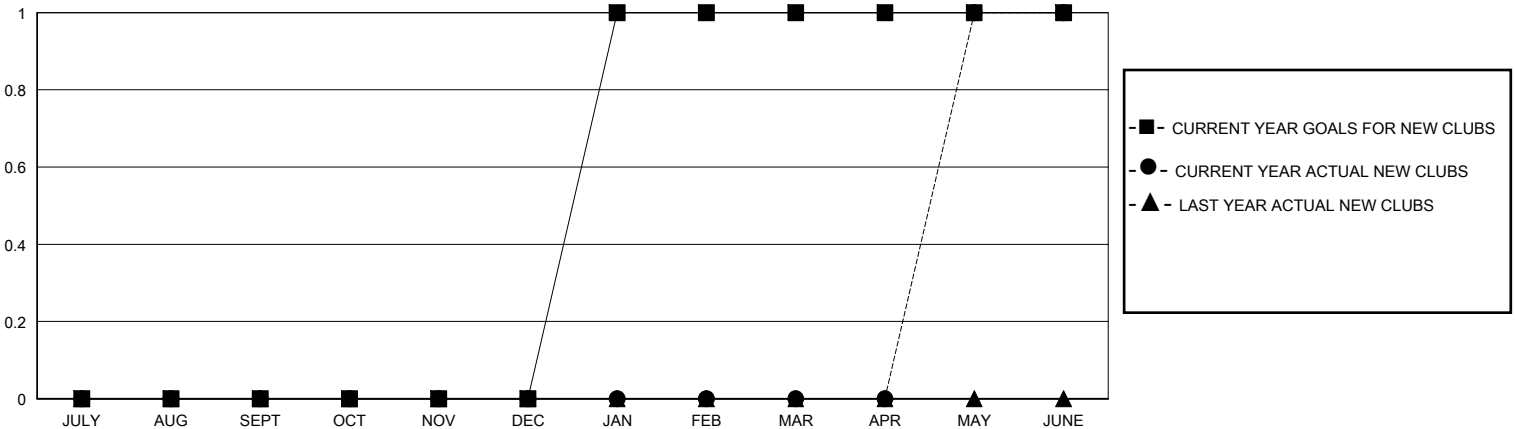
GMT:

LOCATION AUSTRALIA

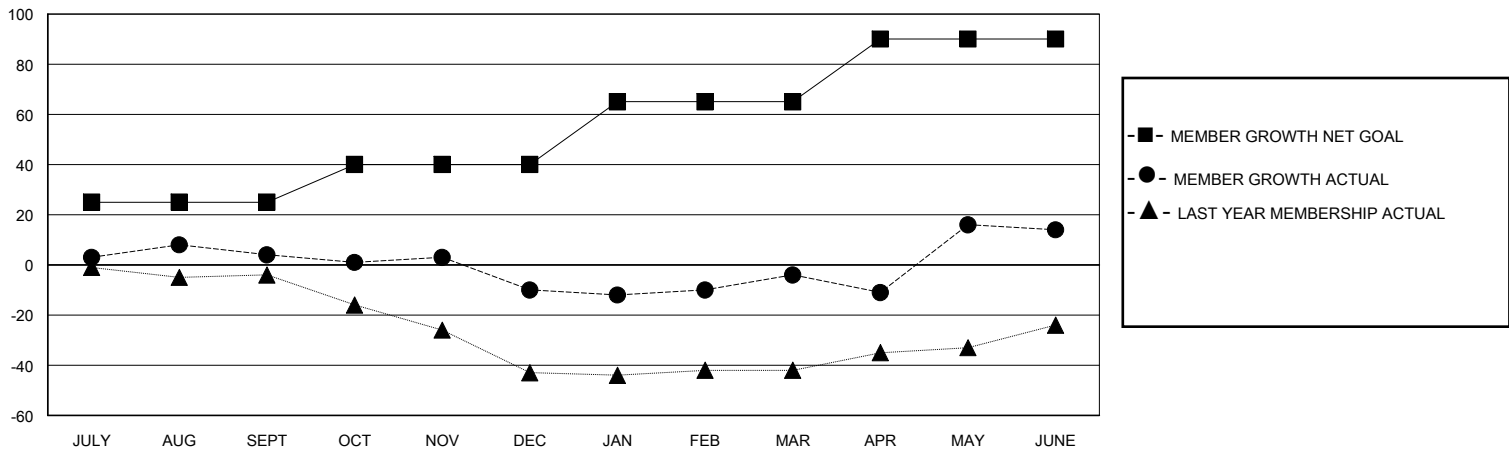
GMT CA

Clubs				Members			
RESULTS FOR 2023-2024				RESULTS FOR 2023-2024			
QUARTER	NEW CLUB GOAL	NEW CLUBS	DROPPED CLUBS	QUARTER	MEMBER GROWTH NET GOAL	MEMBER GROWTH ACTUAL	DROPPED MEMBERS ACTUAL (including transfers)
JULY/AUG/SEPT	0	0	0	JULY/AUG/SEPT	25	39	34
OCT/NOV/DEC	0	0	0	OCT/NOV/DEC	15	18	30
JAN/FEB/MAR	1	0	0	JAN/FEB/MAR	25	40	30
APR/MAY/JUNE	0	1	0	APR/MAY/JUNE	25	85	63

GOALS AND ACTUAL NEW CLUBS CUMULATIVE



GOALS AND ACTUAL MEMBERS CUMULATIVE



DROPPED CLUBS: 0	43 CLUBS OF 63 ADDED 1 OR MORE NEW MEMBERS	<u>GENDER DISTRIBUTION</u>	
		MALE	539 (52.33%)
		FEMALE	491 (47.67%)
<u>DROPPED MEMBERS</u>		TOTAL FAMILY UNIT MEMBERS 179	
DECEASED	17	FAMILY MEMBERS PAYING HALF DUES 93	
CLUB CANCELLED	0		
OTHER	139		
TOTAL	156		

[CLICK HERE FOR CUMULATIVE MEMBERSHIP DATA](#)